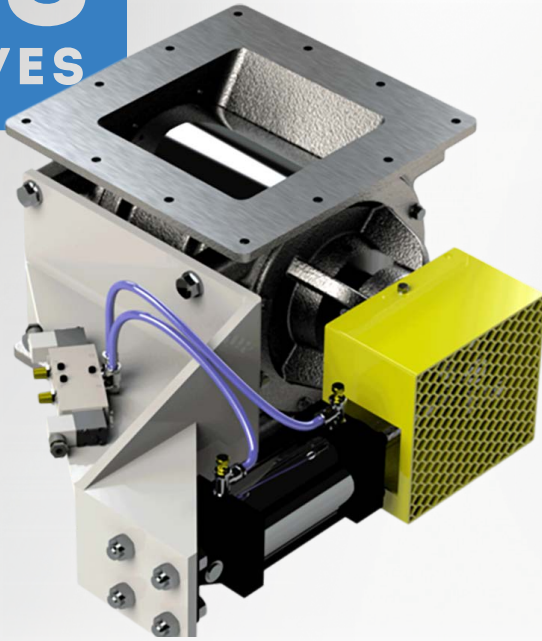


# CI-RPV Series

## Rotary Valve for Feeding and Metering Applications

Rotary plug valve (RPV) design provides highly accurate, controlled feeding of very free-flowing, abrasive, and high bulk density materials; excellent dust control design.



### SECTOR INDUSTRIES:



Plastics



Pet Food



Construction



Food



Pharmaceutical  
and Cosmetics



Chemical

### FEATURES

- Rotary plug valve (RPV) design provides highly accurate, controlled feeding of very free-flowing, abrasive, and high bulk density materials; excellent dust control design.
- Air-actuated clam-style rotor enables rapid material flow control and exceptional air handling efficiency in high-pressure differential applications.
- Air control package includes solenoid, fittings, and tubing; pre-assembled and ready for start-up.
- Available in 5 heights, from 10"H to 19"H; and 5 square-flange sizes from 6" to 14".
- Valve housing and endplates cast in North America; ensures superior strength and solidification of metallurgy; air cylinder mount fabricated of mild steel.
- CNC-machined components and housing provide precision tolerances; eliminates axial shaft movement.
- Heavy-plate chrome interior.

### SPECIFICATIONS:

INLET/OUTLET  
FLANGE SIZES:

5 sizes from 6" to 14"

MATERIAL OF  
CONSTRUCTION:

Cast Iron,  
Stainless Steel

PRESSURE  
DIFFERENTIAL:

-

HIGH TEMPERATURE  
RANGE:

750°F