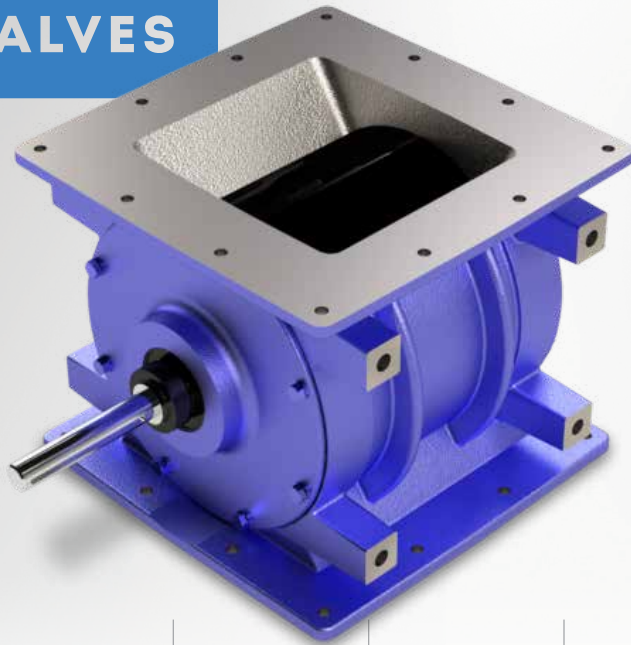


ACS VALVES

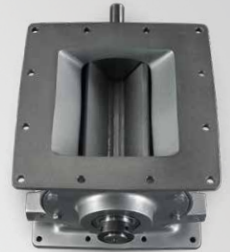


Product Specifications

DC Series

Rotary Valve for Dust Collection, Feeding, & Metering Applications

The DC Series valves are built to application-specific requirements, including: custom rotor configurations, factory-applied internal coatings, and sanitary materials of construction.



SECTOR INDUSTRIES:



Plastics



Pet Food



Construction



Food



Pharmaceutical
and Cosmetics



Chemical

FEATURES

- Available in 3 heights, from 10 1/2"H to 15 1/2"H; and 4 square-flange sizes from 6" to 12".
- Valve housing cast in North America; ensures superior strength and solidification of housing's metallurgy.
- CNC-machined components and housing provide precision tolerances; eliminates axial shaft movement, extends maintenance cycles.
- Excellent performance in high-temperature applications up to 250°F.
- Cast iron housing.
- 6-vane rotor with beveled tips and sides.
- Compact, direct-drive motor package.

SPECIFICATIONS:

INLET/OUTLET
FLANGE SIZES:

4 sizes from 6" to 12"

MATERIAL OF
CONSTRUCTION:

Cast Iron,
Stainless Steel

PRESSURE
DIFFERENTIAL:

-

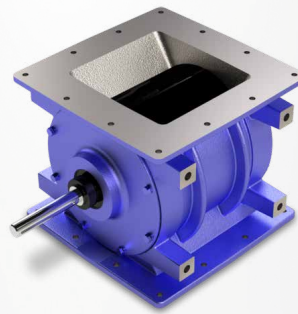
HIGH TEMPERATURE
RANGE:

250°F

Product Specifications

DC Series

Rotary Valve for Dust Collection,
Feeding, & Metering Applications



ACS VALVES

ROTARY VALVE CAPACITY (cubic feet/hour)

VALVE SIZE (INCHES)	6	6	30	48	60	72	84	96	108	120	132
	8	12	60	96	120	144	168	192	216	240	264
	10	24	120	192	240	288	336	384	432	480	528
	12	45	225	360	450	540	630	720	810	900	990
	1	5	8	10	12	14	16	18	20	22	
	ROTARY SPEED (RPM)										

Capacities shown are based on 100% pocket-fill efficiency. Pocket-fill efficiencies vary by application. To ensure optimal efficiency, contact ACS Valves.