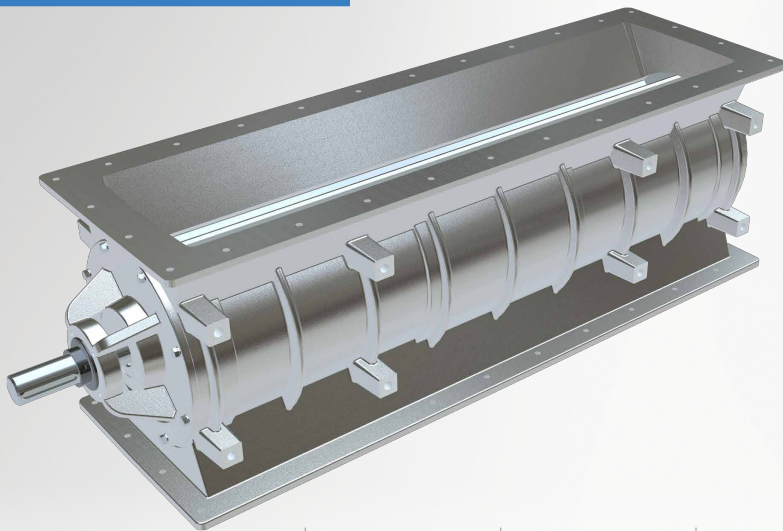


DTFV Series (Discharge Trough Feeder Valve)

Rotary Valve for Feeding
and Metering Applications



SECTOR INDUSTRIES:



Plastics



Pet Food



Construction



Food



Pharmaceutical
and Cosmetics



Chemical

FEATURES

- | | | |
|---|---|--|
| <ul style="list-style-type: none"> For high-volume material handling applications where short-length screw conveyors or conventional rotary valve material handling capacities are not sufficient. | <ul style="list-style-type: none"> CNC-machined components and housing provide precision tolerances; eliminates axial shaft movement, extends maintenance cycles. | <ul style="list-style-type: none"> ACST-4™ glandless Teflon® shaft seal; reduces maintenance and protects bearings from wear. |
| <ul style="list-style-type: none"> Valve housing cast in North America; ensures superior strength and solidification of housing's metallurgy, prevents housing distortion. | <ul style="list-style-type: none"> Outboard bearing design protects bearings in high-temperature and high-PSIG applications; removes bearings from direct path of damaging contaminants. | <ul style="list-style-type: none"> Cast iron housing. 6-vane or 8-vane rotor with beveled tips and sides. |
| | <ul style="list-style-type: none"> Large shaft diameter eliminates rotor deflection; reduces rotor tip wear and bearing seal leakage. | <ul style="list-style-type: none"> TEFC geared motor, side-wall mounted to valve body; with chain drive and safety enclosure. |

SPECIFICATIONS:

INLET/OUTLET
FLANGE SIZES:

3 sizes, 12" x 24"
to 12" x 48"

MATERIAL OF
CONSTRUCTION:

Cast Iron,
Stainless Steel

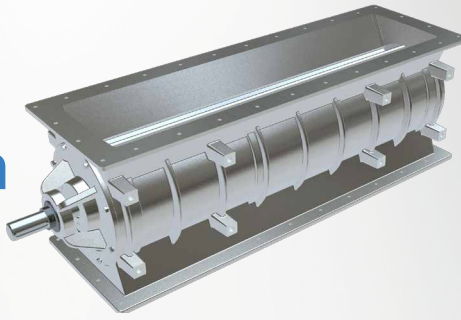
PRESSURE
DIFFERENTIAL:

-

HIGH TEMPERATURE
RANGE:

450°F

DTFV Series (Discharge Trough Feeder Valve)



OPTIONS

- Valve housing material types: 304 or 316 cast stainless steel.
- Interior coating: hard chrome.
- Rotor material types: 304 or 316 stainless steel.
- Adjustable rotor tip types: AR400 steel, 304 or 316 stainless steel.
- Direct-drive motor package.

ROTARY VALVE CAPACITY (cubic feet/hour)

VALVE SIZE (INCHES)	12"x24"	78	390	624	780	936	1092	1248	1404	1560	1716
	12"x36"	102	510	816	1020	1224	1428	1632	1836	2040	2244
	12"x48"	135	675	1080	1350	1620	1890	2160	2430	2700	2970
		1	5	8	10	12	14	16	18	20	22
	ROTARY SPEED (RPM)										