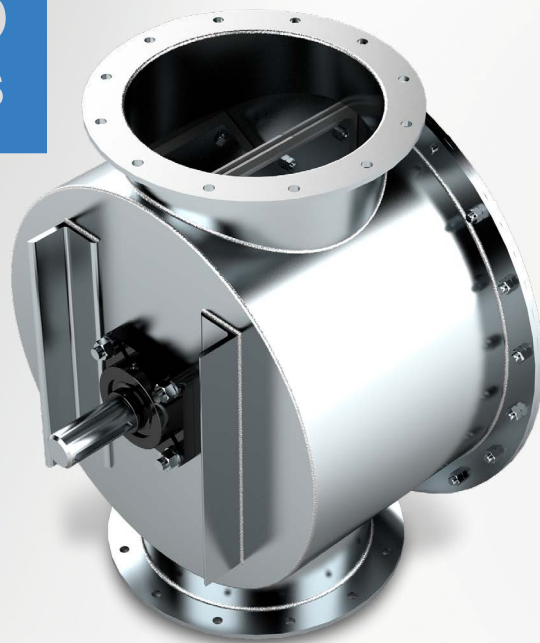


FT Series

Rotary Valve for Feeding and Metering Applications



SECTOR INDUSTRIES:



Plastics



Pet Food



Construction



Food



Pharmaceutical
and Cosmetics



Chemical

FEATURES

- | | |
|--|---|
| <ul style="list-style-type: none"> Available in 9 heights, from 13" to 49 1/2"; and 10 flange diameters from 4" to 30". | <ul style="list-style-type: none"> Industrial-duty housing constructed of mild steel; housing sideplate removes for easy access. |
| <ul style="list-style-type: none"> Rotor with flex-tip wiper vanes produces static pressures up to 18" WG. | <ul style="list-style-type: none"> Chain-drive, right-angle gearmotor provides reliable operation. |
| <ul style="list-style-type: none"> EPDM synthetic wiper vanes resist material abrasion; extend maintenance cycles. | <ul style="list-style-type: none"> Excellent performance in applications up to 200°F. |

SPECIFICATIONS:

INLET/OUTLET
FLANGE SIZES:

10 sizes from 4" to 30"
or custom

MATERIAL OF
CONSTRUCTION:

Mild Steel,
Stainless Steel

PRESSURE
DIFFERENTIAL:

Up to 18" WG

HIGH TEMPERATURE
RANGE:

500°F