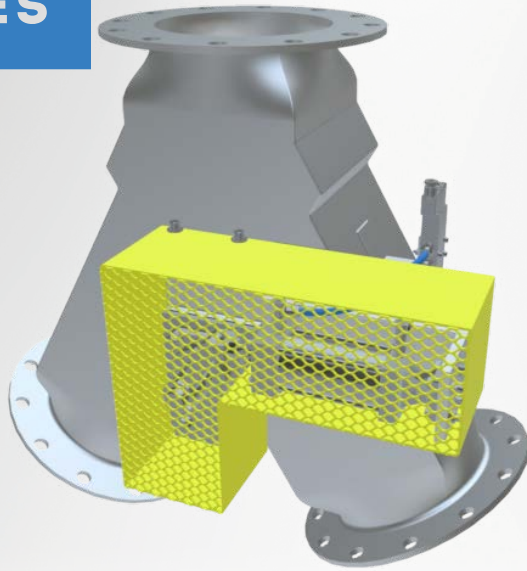


Gravity Diverter Valve Y-style Series

For Feeding and
Metering Applications



SECTOR INDUSTRIES:



Plastics



Pet Food



Construction



Food



Pharmaceutical
and Cosmetics



Chemical

FEATURES

- 2-way, Y-style, gravity diverter valve provides automated control of bulk material flow direction; improves efficiency of material feeding and loading operations.
- Available in 4 heights, from 16 5/16"H to 24"H, and 4 square-flange sizes from 6" to 12".
- Available in 30-degree or 45-degree outlet angles.
- 10 ga. carbon steel housing construction; heavy-duty carbon steel flappers with neoprene seal strips and carbon steel seats.
- Air control package includes solenoid, fittings, and tubing; pre-assembled and ready for start-up.
- Excellent performance in high-temperature applications up to 500°F.

SPECIFICATIONS:

INLET/OUTLET
FLANGE SIZES:

4 sizes from 6" to 12"
or custom

MATERIAL OF
CONSTRUCTION:

Carbon Steel,
Stainless Steel

PRESSURE
DIFFERENTIAL:

Up to 30" WG

HIGH TEMPERATURE
RANGE:

500°F