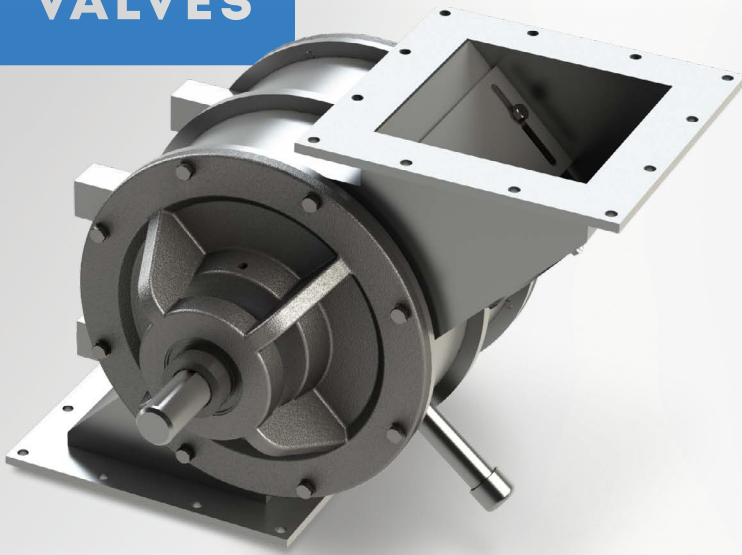


S-Pellet Series

Rotary Valve for Metering, Feeding, and Airlock Applications

For handling of material such as pellets, beads, and granules that require protection from shearing; side inlet with adjustable material flow control ensures accurate rotor pocket filling without material shearing.



SECTOR INDUSTRIES:



Plastics



Pet Food



Construction



Food



Pharmaceutical
and Cosmetics



Chemical

FEATURES

- For handling of material such as pellets, beads, and granules that require protection from shearing; side-inlet with adjustable material flow control ensures accurate rotor pocket filling without material shearing.
- Available in 6 heights, from 14"H to 26"H; and 6 flange diameters from 6" to 16".
- Valve housing fabricated of mild steel.
- CNC-machined components and housing provide precision tolerances; eliminates axial shaft movement, extends maintenance cycles.
- Outboard bearing design protects bearings in high-temperature and high-PSIG applications; removes bearings from direct path of damaging contaminants.
- Easily manages pressure differentials up to 15 PSIG.
- Excellent performance in high-temperature applications up to 750°F.
- Cast iron housing.
- 8-vane rotor with beveled tips and sides.

SPECIFICATIONS:

INLET/OUTLET
FLANGE SIZES:

6 sizes from 6" to 16"

MATERIAL OF
CONSTRUCTION:

Cast Iron,
Stainless Steel

PRESSURE
DIFFERENTIAL:

Up to 15 PSIG

HIGH TEMPERATURE
RANGE:

750°F