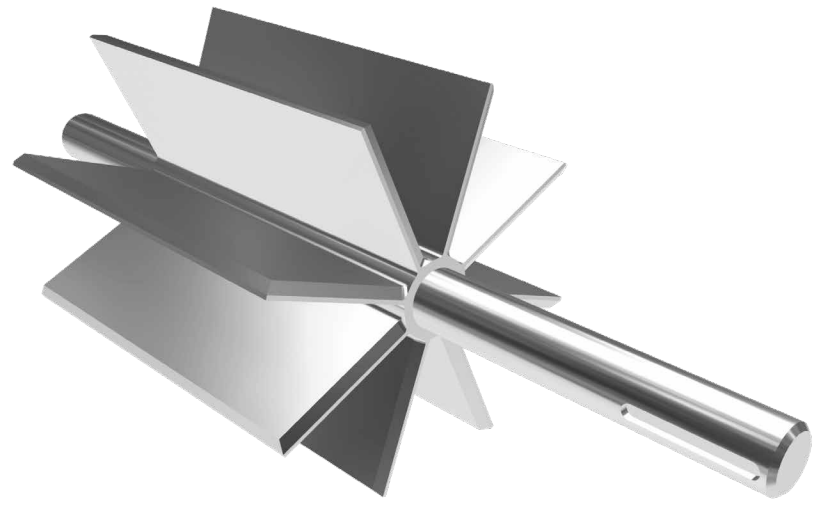


STANDARD CONFIGURATION



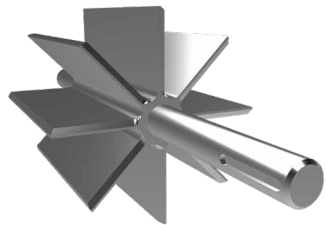
OPEN END ROTOR

Standard rotor configuration with 8 vanes.
Also available in 6, 10 or 12 vanes.

GET YOUR Rotor Runnin'

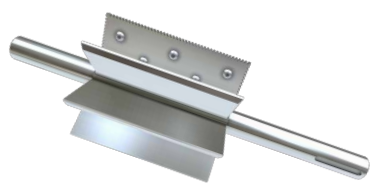
Tricky material? Optimize your rotary airlock valve with a specialized rotor. Different vanes, tips and grooves boost material flow and efficiency in any application.

SANITARY OR FOOD-GRADE



RADIUS POCKET ROTOR

For sanitary valves, U-shaped rotor pockets minimize material packing in the creases.



BOLT-ON SERRATED TIPS ROTOR

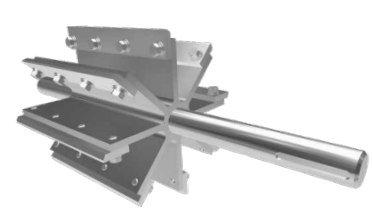
Serrated tips scrape the valve's interiors to remove buildup of granulated sticky materials.

ABRASIVE MATERIAL



CLOSED END ROTOR

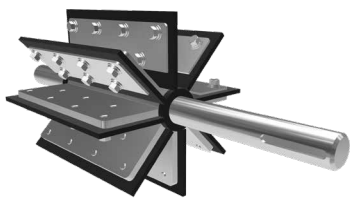
Protects the valve from very abrasive material and reduces jamming with flake or chip material.



ADJUSTABLE ROTOR

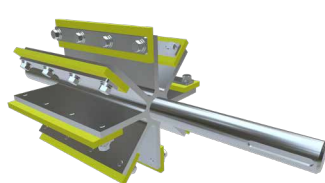
Easily replace adjustable rotor tips worn down by moderately abrasive material.

FIBROUS OR FLAKY MATERIAL



FLEX TIP STYLE ROTOR

Flexible tips make it easier to convey fibrous materials, flakes or chips.



ADJUSTABLE POLYURETHANE TIP ROTOR

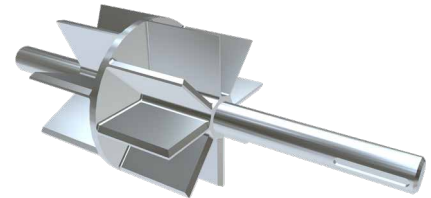
Flexible adjustable tips help convey material such as plastic pellets, regrind and flakes.

OPTIMAL MATERIAL FLOW



HELICAL ROTOR

Helical design (open or closed-end) provides more uniform material flow.



STAGGERED POCKET ROTOR

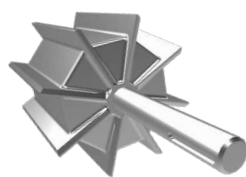
16 offset pockets provide continuous, uniform material flow to improve accuracy.

METERING OR SMALL BATCHES



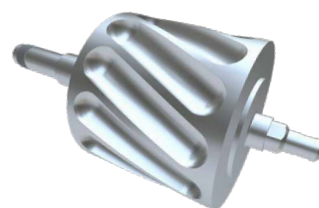
METERING ROTOR

Grooves help meter out smaller amounts or test batches of powdery material.



REDUCED VOLUME ROTOR

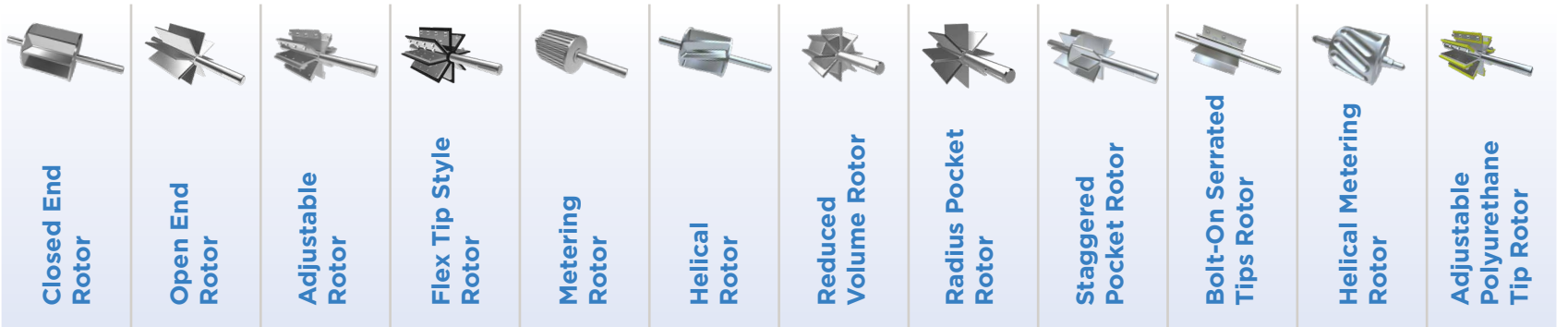
Controls flow rate for metering by reducing the cubic foot per revolution (CFR).



HELICAL METERING ROTOR

Helical design with grooves allows metering and promotes continuous material flow.

Combinations



	Closed End Rotor	Open End Rotor	Adjustable Rotor	Flex Tip Style Rotor	Metering Rotor	Helical Rotor	Reduced Volume Rotor	Radius Pocket Rotor	Staggered Pocket Rotor	Bolt-On Serrated Tips Rotor	Helical Metering Rotor	Adjustable Polyurethane Tip Rotor
CI Series	●	●	●	●	●	●	●	●	●	●	●	●
MD Series	●	●	●	●	●	●	●	●	●	●	●	●
XTR-CI	●	●	●	●	●	●	●	●	●	●	●	●
XTR-MD	●	●	●	●	●	●	●	●	●	●	●	●
Multi-Port	●	●	●									
QC-CI	●	●				●	●	●	●	●		
San QC-CI	●	●				●	●	●	●	●		
QC-MD	●	●				●	●	●	●	●		
San QC-MD	●	●				●	●	●	●	●		
S-Pellet	●	●					●					
DR-S	●	●	●	●	●	●	●	●	●	●	●	●
SD		●										
DTFV	●	●										
CDC-CI	●	●								●		
BT		●								●		
Aero-Flow		●										
AN-X	●	●										
FT				●								
Mini 19		●			●							
Micro-Ingredient					●							