

SD Series

Rotary Valve for Metering
and Airlock Applications



SECTOR INDUSTRIES:



Plastics



Pet Food



Construction



Food



Pharmaceutical
and Cosmetics



Chemical

FEATURES

- | | |
|--|---|
| <ul style="list-style-type: none"> Available in 4 heights, from 10"H to 18 1/4"H; and 4 square-flange sizes from 6" to 12". | <ul style="list-style-type: none"> Excellent performance in high-temperature applications up to 250°F. |
| <ul style="list-style-type: none"> This ACS Valves Pre-fit Performance™ Series valve enables simple and fast drop-in replacement of Meyer® type SD rotary valves. | <ul style="list-style-type: none"> Cast iron housing. |
| <ul style="list-style-type: none"> Valve housing cast in North America; ensures superior strength and solidification of housing's metallurgy. | <ul style="list-style-type: none"> 6-vane or 8-vane rotor with beveled tips and sides. |
| <ul style="list-style-type: none"> CNC-machined components and housing provide precision tolerances; eliminates axial shaft movement, extends maintenance cycles. | <ul style="list-style-type: none"> Direct-drive motor package. |

SPECIFICATIONS:

INLET/OUTLET
FLANGE SIZES:

4 sizes from 6" to 12"

MATERIAL OF
CONSTRUCTION:

Cast Iron,
Stainless Steel

PRESSURE
DIFFERENTIAL:

-

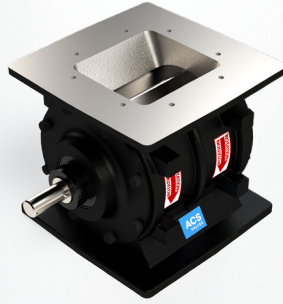
HIGH TEMPERATURE
RANGE:

250°F

Product Specifications

SD Series

Rotary Valve for Metering and Airlock Applications



ACS VALVES

ROTARY VALVE CAPACITY (cubic feet/hour)

| | | | | | | | | | | | |
|------------------------|---------------------------|----------|----------|-----------|-----------|-----------|-----------|-----------|-----------|-----------|-----|
| VALVE SIZE (INCHES) | 6 | 6 | 30 | 48 | 60 | 72 | 84 | 96 | 108 | 120 | 132 |
| | 8 | 10 | 51 | 82 | 102 | 122 | 143 | 163 | 184 | 204 | 224 |
| | 10 | 20 | 102 | 163 | 204 | 245 | 286 | 326 | 367 | 408 | 449 |
| | 12 | 37 | 183 | 293 | 366 | 439 | 512 | 586 | 659 | 732 | 805 |
| | 1 | 5 | 8 | 10 | 12 | 14 | 16 | 18 | 20 | 22 | |
| | ROTARY SPEED (RPM) | | | | | | | | | | |

Capacities shown are based on 100% pocket-fill efficiency. Pocket-fill efficiencies vary by application. To ensure optimal efficiency, contact ACS Valves.